



Al Faris Group

Specialists in Heavy Lifting, Heavy Transport and Energy Solutions

With the largest fleet of cranes & other heavy equipment in the Middle East



Al Faris Group

Founded in 1992, we are a family-owned business renowned for our operational efficiency and performance results across the MENA Region.

With state of the art equipment along with integrated best practices in QHSE; we provide - safe, innovative, and reliable solutions for Heavy Lifting, Heavy Transport and Energy projects.

Our comprehensive network of depots and dedicated teams of professionals are ready to fully serve your needs, using local knowledge and global experience while upholding the highest standards of quality, safety and integrity across all our operations.



A legacy of
30+ Years
in heavy lifting, heavy
transport & energy solutions



2450+
Equipment
in fleet



35+
Heavy equipment
categories



10+
Corporate offices



5400+
Successfully completed
projects



1500+
Satisfied customers



3200+
Workforce



100+
Active sites
everyday



AL FARIS

www.alfarigroup.com

Al Faris Group

Our brand-new, state-of-the-art facility in Dubai with qualified technicians working to International standards for service and maintenance providing 24/7 support which also includes our mobile workshops.



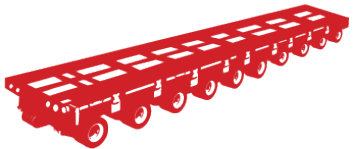
953+
Mobile cranes



80+
Crawler cranes



200+
Flatbed & lowbed trailers



100+
Hydraulic trailers
500+ Axle Lines



200+
Forklifts



OUR FOOTPRINT

With a workforce of more than 3,200 dedicated employees, we focus in the Middle East region with our head office centered in Dubai and other corporate offices in United Arab Emirates, Kingdom of Saudi Arabia and Bahrain.



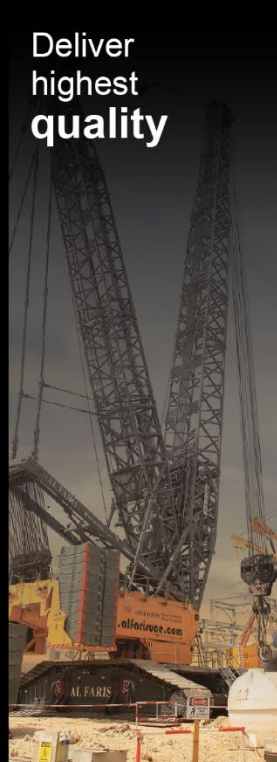
Our Drive

Vision: To be a global world class provider of integrated heavy lifting, heavy transport and energy solutions using the latest, safest and most reliable equipment and techniques.

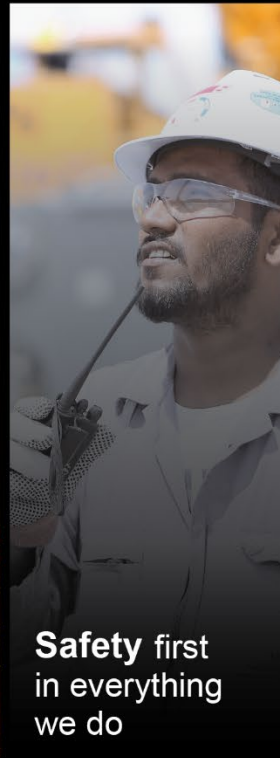
Mission: To constantly improve and guarantee our customers with the highest level of safety using our state of the art equipment, engineering and competent staff while upholding the highest standards of quality, integrity and sustainability across all our operations.

OUR VALUES

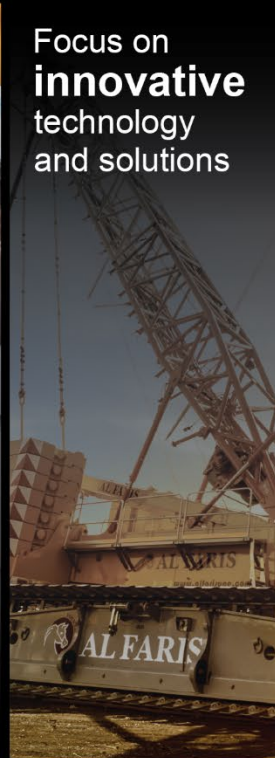
Deliver
highest
quality



Safety first
in everything
we do



Focus on
innovative
technology
and solutions



Upholding
integrity
across
all our
operations



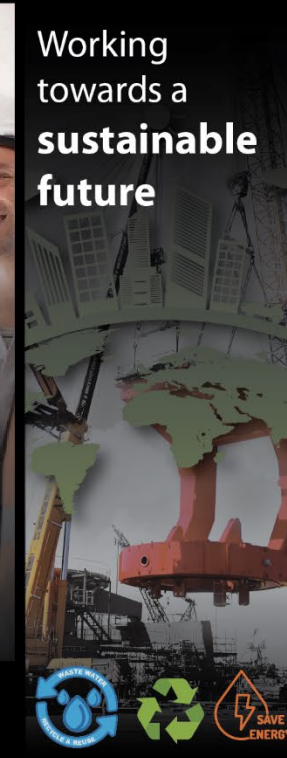
Commitment
among our
employees



Reliable
partner for our
customers



Working
towards a
sustainable
future



Core Services and Equipment



HEAVY LIFTING

- Cranes and other specialised equipment rentals with well trained operators
- Professional consultancy with innovative engineering techniques
- Turnkey solutions including project management, technical assessments and competent dedicated staff
- Alternative lifting techniques – jacking and skidding
- Proof load testing & load weighing
- 24/7 fully equipped mobile workshops and maintenance

CRANES

- All terrain cranes
- Rough terrain cranes
- Lattice boom crawler cranes
- Telescopic crawler cranes
- Truck mounted cranes

OTHERS

- Hydraulic gantries, modular towers, jacking & skidding equipment
- Wheel loaders
- Special purpose forklifts
- Rig specific heavy lifting equipment

HEAVY TRANSPORT

- Trailers and other specialised equipment rentals with well trained operators
- Professional consultancy with innovative engineering solutions
- Turnkey solutions including project management, route planning, technical evaluation and competent dedicated staff
- 24/7 fully equipped mobile workshops and maintenance

TRAILERS

- Self-propelled modular transporters (SPMT's)
- Modular multi axle hydraulic trailers
- Hydraulic drop deck trailers
- Hydraulic bolster trailers
- Hydraulic crawler decks
- Heavy duty low bed trailers
- Flatbed trailers
- Prime movers
- Super sucker 4000
- Mud haulage tanker
- Dolly trailers
- Extendable trailers
- Off-road trucks
- Rig specific heavy transport equipment

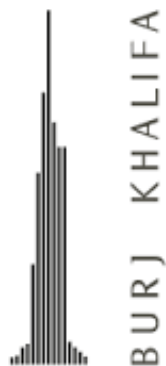
ENERGY SOLUTIONS

- Specialised equipment rentals for short/long term
- Site infrastructure
- Plant design & application engineering
- Temporary cooling solutions
- Transport, installation & commissioning
- Operation & maintenance including fuel management
- 24/7 breakdown & sales support
- Highly skilled manpower services

CORE EQUIPMENT

- Generators (diesel, bi-fuel & gas) producing multi megawatt capacity
- Step-up/step-down transformers
- Oil cooled & oil free air compressors
- Diesel welding machines
- Tower lights
- Package units, chillers, AHU & accessories
- Bunded and cylindrical fuel tanks with very large storage capacity
- Hybrid power solutions-combination of diesel generator & solar

Iconic Projects



THE
DUBAI MALL

AIN DUBAI

DUBAI
SOLAR PARK



EXPO 2021
DUBAI, UAE



Supporting Leading Clients



QHSE Culture and Commitment

Apart from the quality of the equipment, Al Faris provides a strong commitment to investment in the development of QHSE practices which is our focus across all our operations. Our safety, health and quality standards are well integrated in our daily work, training and all on-site jobs.

Al Faris' Executive Management is committed to safeguarding the health, safety and welfare of its employees as well as the people and property affected by its operations. There is a strong focus to continually enhance management's direct participation through personal example and leadership in all aspects of safety and health.

We are committed to providing adequate resources to train, monitor and assess the company's health and safety performance and deliver the objectives set for continuous improvement.

At Al Faris we operate in a safe, efficient and ethical manner, protecting the planet and supporting our GREEN FUTURE.

In 2021, we have pledged to maintain 100% HSE with zero incidents, and reduce water as well as energy usage by 25% across all our business operations.



Training Capabilities

All our project crew are well trained to International standards with on-going training for further development and enhancement of skills pertaining to their respective jobs:

- Our extensive training program, combined with onsite learning, ensures all our professionals perform their tasks with safety as their priority
- Our engineering and technical departments conduct enhanced training programs (practical and theory) for our staff including heavy lift, commissioning and other advanced technical training at regular intervals
- Our team also undergoes extensive professional training at our partner (manufacturers and suppliers) training centres on the most efficient use and maintenance of the purchased heavy equipment. i.e. Liebherr, Goldhofer, Enerpac, Volvo among others



HEAVY LIFTING SOLUTIONS

*Innovative heavy lifting solutions designed to meet
all your requirements.*



CORE EQUIPMENT



**ALL TERRAIN
CRANES**



**LATTICE BOOM
CRAWLER CRANES**



**TELESCOPIC
CRAWLER CRANES**



**ROUGH TERRAIN
CRANES**



**TRUCK MOUNTED
CRANES**



**SPECIAL PURPOSE
FORKLIFTS**



AL FARIS

www.alfarigroup.com

OVERVIEW



Heavy Lifting

- Largest fleet of cranes and other specialised equipment for complete lifting solutions that range from conventional to highly innovative and alternative lifting methods
- Available for rent with or without operator for long term as well as short-term requirements
- Turnkey solutions from consultation to in-house rigging studies with detailed risk analysis and project specific method statements
- Customised engineered solutions for critical heavy lifts and other solutions
- Highly skilled and trained personnel to ensure safety with utmost perfection

OPERATIONAL READINESS CONSISTENTLY ABOVE 95%



www.alfarigroup.com

ALTERNATIVE LIFTING METHODS

CORE EQUIPMENT



**HYDRAULIC
GANTRIES**



**SKIDDING SYSTEM -
MODULAR
PUSH & PULL UNIT**



**EVO SERIES
SYNCHRONOUS
JACKING SYSTEM**



OVERVIEW



Jacking and Skidding

- Jacking and skidding of heavy loads in confined restricted spaces where using cranes is not possible
- In-house developed, tailor-made Jacking and Skidding techniques
- Provide special tools and equipment for rental purposes
- Cost effective and safe

DESIGNED TO SUCCEED IN CHALLENGING PROJECTS



www.alfarigroup.com

HEAVY TRANSPORT SOLUTIONS

CORE EQUIPMENT



**HYDRAULIC
TRAILERS**



**SELF PROPELLED
MODULAR
TRANSPORTERS
(SPMT'S)**



**LOW BED &
FLAT BED TRAILERS**



OVERVIEW



Heavy Transport

- Provide turnkey project support to our clients from transporting and off-loading to installing extremely over-sized loads
- Specialised equipment rentals from conventional trailers to self-propelled modular transporters (SPMTs)
- Hands on experience and expertise in handling any load by road from source to destination
- In-house engineered route analysis and plans

HAVING INVESTED IN OUR TECHNOLOGICALLY ADVANCED HEAVY EQUIPMENT, WE HAVE EVOLVED TO MEET THE RISING DEMANDS OF THE INDUSTRIES WE OPERATE IN



www.alfarigroup.com



ENERGY SOLUTIONS

Fully equipped with large fleet of generators, transformers, air compressors, welding machines, light towers and accessories providing temporary power solutions.



CORE EQUIPMENT



GENERATORS



**TRANSFORMERS
AND SWITCHGEARS**



**BUNDLED AND
CYLINDRICAL
FUEL TANKS**



**OIL COOLED & OIL FREE
AIR COMPRESSORS**



**WELDING
MACHINES**



**HYBRID POWER
SOLUTION**



TOWER LIGHTS



**DISTRIBUTION
BOARDS**



OVERVIEW



UAE MARKET LEADER AND PREFERRED SUPPLIER

Over 1000 units

- Powering the MENA Region from its centre at Dubai Industrial Park, Dubai and a rebuild centre in Al Quoz, Dubai
- Fully equipped with large fleet of diesel generators from 10kVA to 2000kVA, transformers from 600V to 33KV output voltage with other equipment and accessories
- Turnkey solutions offering site infrastructure, plant design & application engineering, transport, installation and commissioning as well as fuel management
- Operation and maintenance with 24/7 breakdown service



**LOCAL
KNOWLEDGE**



**AUTHORISED
PERMITS IN RESTRICTED
AREAS**



**RIGOROUS
SAFETY STANDARDS**



**TURNKEY
SOLUTIONS**



**EXTENSIVE INDUSTRY
EXPERIENCE & KNOWLEDGE**



**MULTIPLE
DEPOTS**



**SKILLED
MANPOWER**



AL FARIS

www.alfarigroup.com



RIG TRANSPORT, LIFTING & DRILLING

rig specific heavy **equipment** supply



OVERVIEW

At Al Faris we are fully equipped with all the requirements for Rig moves – transporting and lifting with our fleet of cranes, large forklifts, haulage trucks, trailers and other special vehicles, operated by trained field personnel.



**WHEEL LOADERS WITH
SPECIAL ATTACHMENTS**



**RIG TRANSPORT
PRIME MOVERS**



BOP TESTING



SUPER SUCKER 4000



MUD HAULAGE TANKER

CORE SERVICES

- Complete solutions for rig moves and re-location
- Testing rig BOP's (blow-out preventer)
- Consultancy, route surveys, pre-planning, permissions etc.
- Strategic equipment supply





SPECIAL PURPOSE FORKLIFTS

Upto **52t** with **load stabilizer** and **coil ram** attachments.



OVERVIEW



**Load stabilizer
attachment upto 16t**



**Coil ram attachment
upto 45t**



**Container forklift
1t - 10t**



**Reachstacker
45t**

INDUSTRY APPLICATION

- Ports & terminals
- Steel industry
- Metal industry
- Logistics and distribution
- Renewable energy industry
- Rig sites/oil fields & other heavy industries

FEATURES



HEAVY DUTY
EQUIPMENT & ATTACHMENTS



PRIORITIZING SAFETY
& OPERATOR ERGONOMICS



**DESIGNED FOR MAXIMUM
PRODUCTIVITY**



ECO DRIVE
AXLE



TURNABLE
DRIVER SEAT 180°



www.alfarigroup.com

CONSULTANCY



**RECEIVED AWARDS FOR OUR 'OUT OF THE BOX'
SOLUTIONS ON CRITICAL HEAVY LIFTING AND
HEAVY TRANSPORTATION SOLUTIONS**

Our experienced engineers and technicians have a big positive impact on your project uptime!

- Professional consultation and technical assessments for all types of heavy lifting and heavy transport job requirements
- Engineered rigging studies to ensure maximum safety and efficiency
- Provide computer aided design lift plans, method statements, job risks and hazard assessments
- Work on complex structural calculations in order to select the most effective solutions for our clients
- Carry out extensive route surveys, identify obstacles and feasibility studies
- Trained, certified, competent technicians and operators that ensure quality, safety and efficiency



www.alfarigroup.com

LOAD TESTING & WEIGHING SOLUTIONS



- Supply of certified calibrated test weights
- In-house designed and calibrated test weights
- Load testing of all types of lifting equipment
- Load testing of onshore oil drilling equipment
- Load weighing and COG calculations
- In-House customised spreader frames

AL FARIS HAS BECOME A MARKET LEADER IN THE PROCUREMENT AND DISTRIBUTION OF **TEST LOADS** AND **WEIGHING SYSTEMS**.



www.alfarigroup.com

WORKSHOP & MAINTENANCE



Keeping our business and your projects up and running!

- Set up dedicated workshops for service and maintenance with dispatch depots all around the region
- Large inventory of equipment spare parts to facilitate a quick-fix wherever possible
- Availability of service vehicles with trained and competent crew 24×7 to ensure efficient operation of all our equipment
- Equipped service vehicles with all on-site required maintenance and fitted with safety systems

OUR TECHNICIANS ARE TRAINED TO TROUBLESHOOT AND REPAIR ON-SITE THEREBY MINIMISING EQUIPMENT DOWNTIME



www.alfarigroup.com



OUR PROJECTS

Industries we work in

CIVIL & CONSTRUCTION

SHIPPING & LOGISTICS

OIL & GAS

MARINE / OFFSHORE

PETROCHEMICAL

MANUFACTURING

POWER

POWER (ENERGY SOLUTIONS)

RENEWABLE ENERGY SECTOR

**Click on the specific industries to view projects*



CIVIL AND CONSTRUCTION

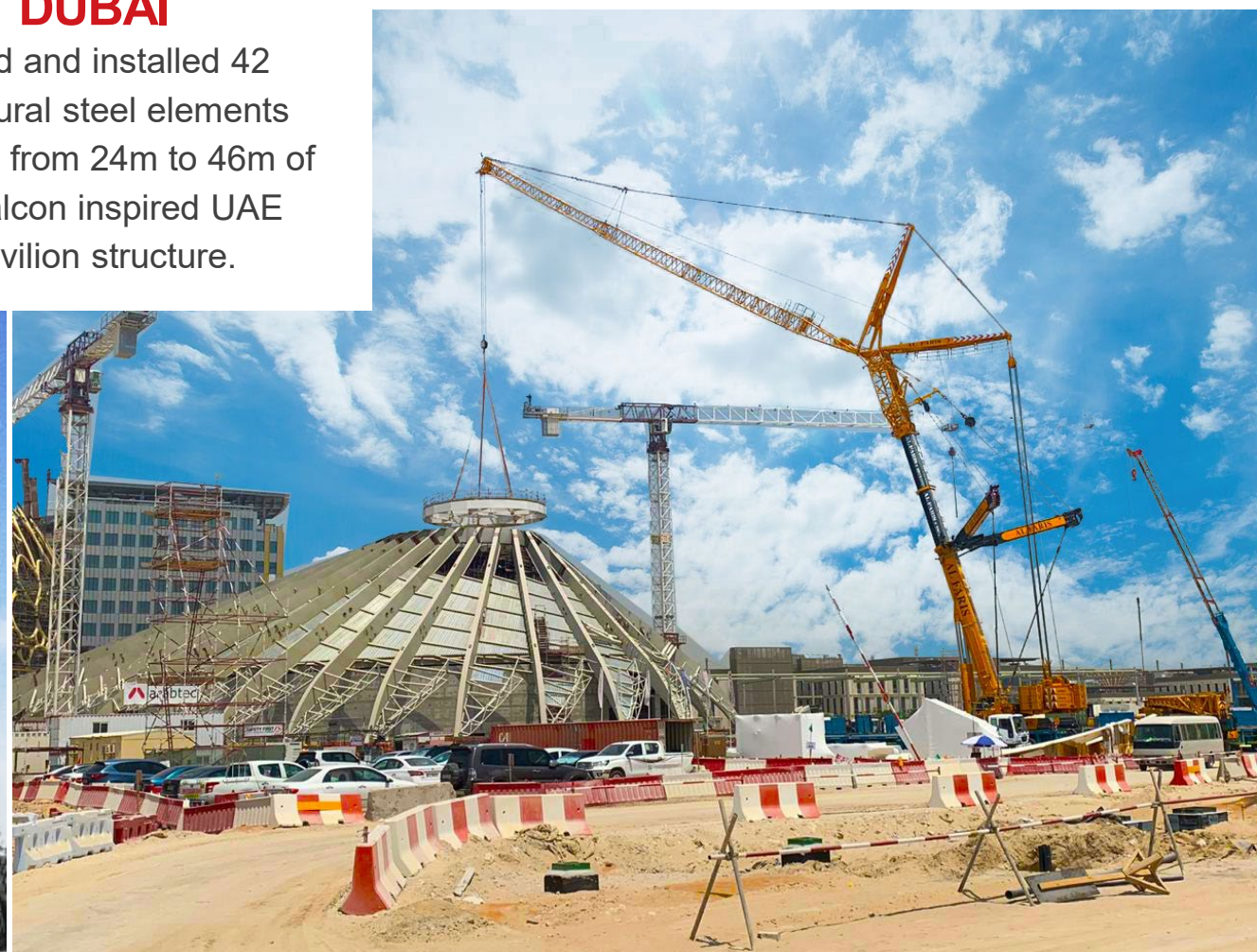
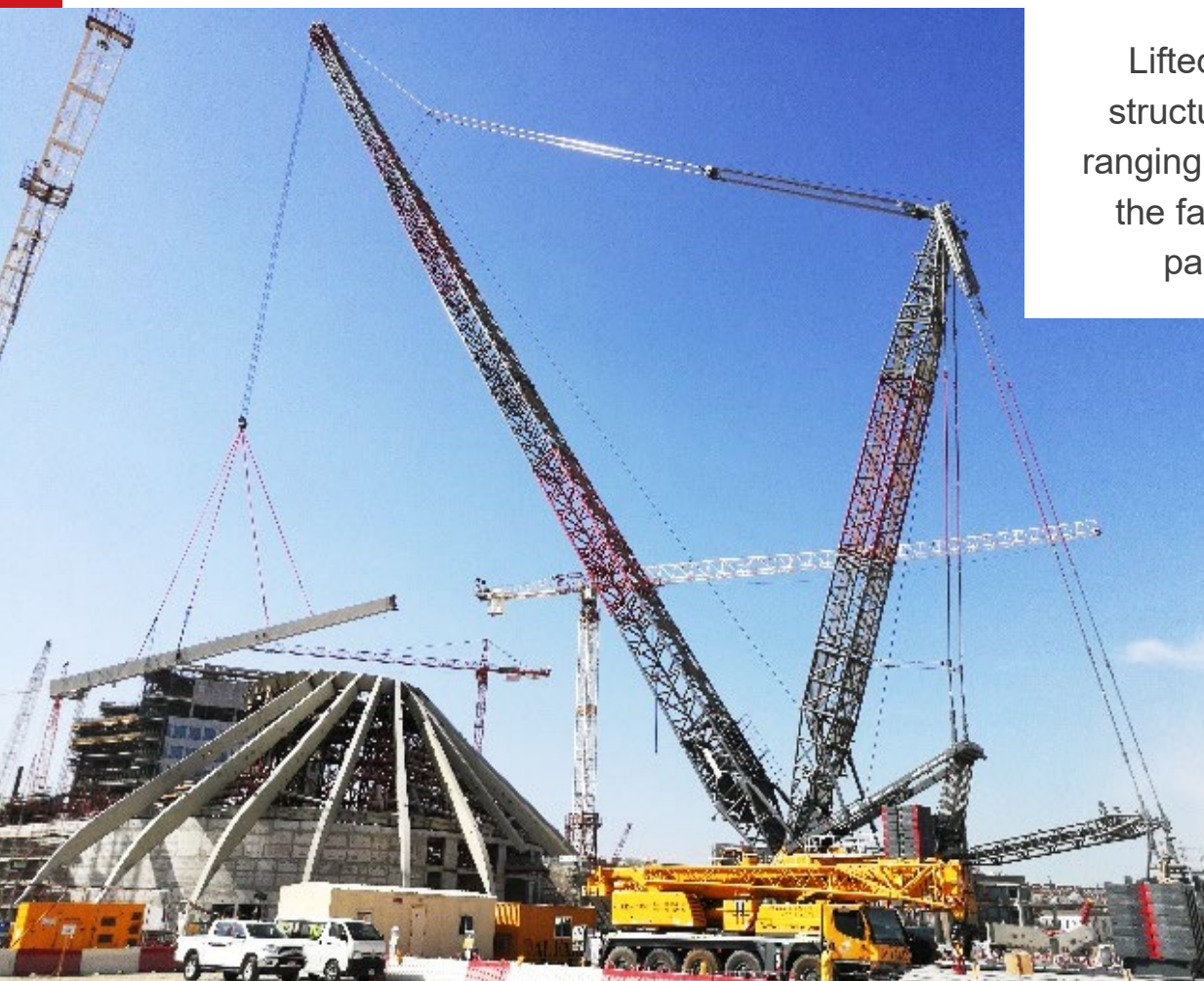
EXPO 2020



Click on icon to return to the project slide

DUBAI

Lifted and installed 42 structural steel elements ranging from 24m to 46m of the falcon inspired UAE pavilion structure.



**Liebherr 1000t crawler crane with 156m main boom and 750t mobile crane with S/L and luffing jib were used for this operation.*

CIVIL AND CONSTRUCTION



Click on icon to return to the project slide

ABU DHABI

Lifting and installation of Girders to link Al Mariyah Island with Al Reem Island in Abu Dhabi, UAE

**Similar lifting was carried out at 2 locations installing 8 Girders at location 1 and 16 Girders at Location 2*

** 1200t and 500t mobile cranes were used for this tandem operation*



www.alfarigroup.com



CIVIL AND CONSTRUCTION

Click on icon to return to the project slide



Multiple crane lift for our client in Jubail,
Saudi Arabia

SAUDI ARABIA



CIVIL AND CONSTRUCTION



Click on icon to return to the project slide

Lifting and erecting 26 Girders on the Al Maryah Island in Abu Dhabi, UAE

ABU DHABI

**Liebherr 600t crawler crane with a 84m boom was used for this project*

CIVIL AND CONSTRUCTION



Click on icon to return to the project slide

DUBAI

Multi crane lifting of large sized roof structures for the Falcon Centre

**1200t, 500t and 400t mobile cranes were the main cranes used along with other supporting cranes*



AL FARIS

www.alfarigroup.com

CIVIL AND CONSTRUCTION

AIN DUBAI (DUBAI EYE)



Click on icon to return to the project slide



Loaded and transported the 48 passenger capsules of Ain Dubai

We also designed and fabricated a steel ramp in order to support our client in the skidding process of these capsules.

DUBAI

**2 files of 6 axle conventional hydraulic trailers with a 8m drop deck attachment were used for this project.*

www.alfarisgroup.com

CIVIL AND CONSTRUCTION

DUBAI METRO



Click on icon to return to the project slide

Dubai Metro extension project

Transported and off-loaded the new metro wagons that arrived from France for the new Dubai Metro extension project. A total of 250 metro wagons were transported in 2019-2020 using our conventional hydraulic trailers and other heavy equipment.



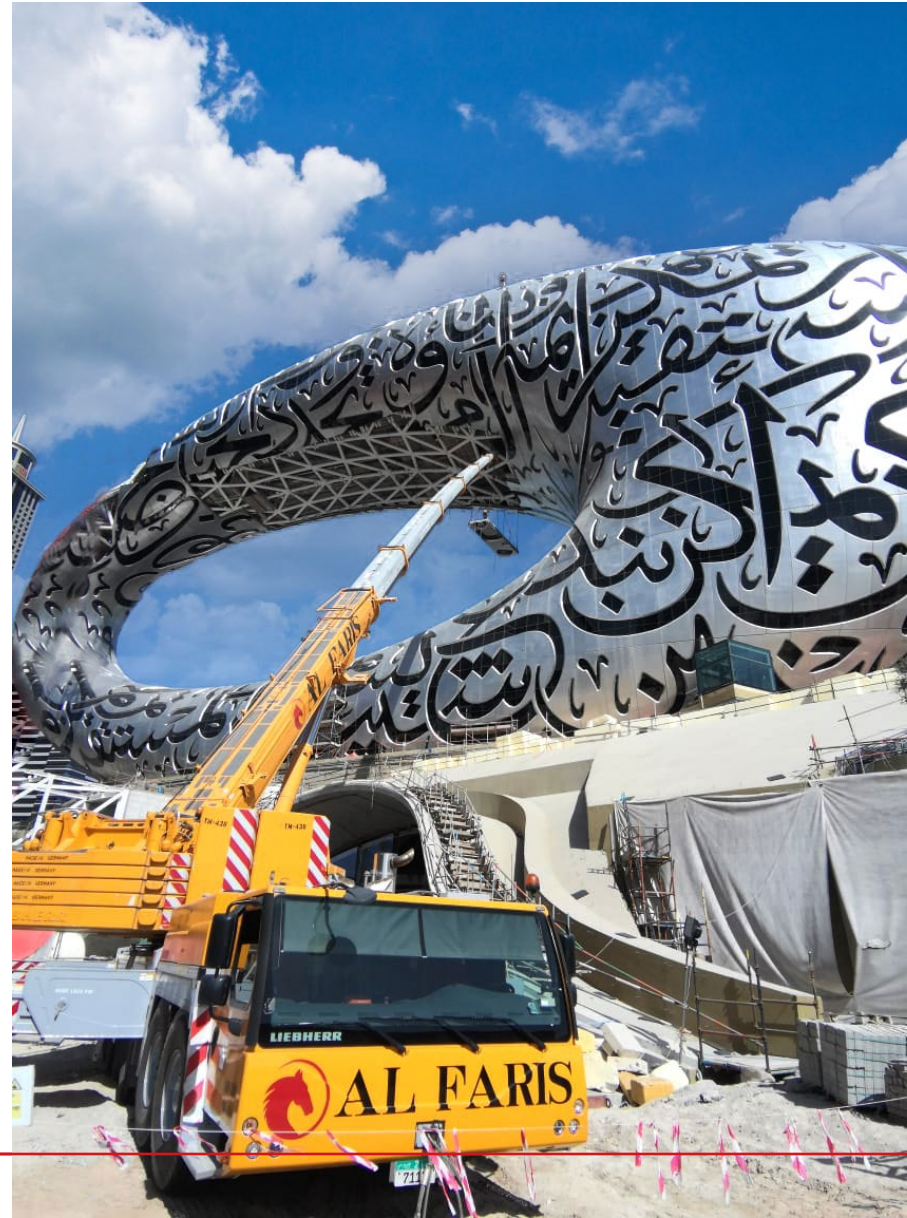
DUBAI



CIVIL AND CONSTRUCTION

Museum of the Future

From **transferring** of building materials during the excavation phase to conducting **complex lifts** of facades on the inner layer of the building and installing the **pedestrian walkway bridge** which connects the Dubai Metro to the MOTF, we were part of many heavy lifting activities in every stage for the last 6 years.



Click on icon to return to the project slide

CIVIL AND CONSTRUCTION



Click on icon to return to the project slide

The biggest installation lift of the
New Etihad Rail Project

Hopper:
14m width
14m length
8m height
169t weight



Hopper:
9m width
9m length
9m height
181t weight



OIL & GAS



Click on icon to return to the project slide

Complete land transport solutions of 19 vessels covering a distance of 150km for a crude-oil production facility in Abu Dhabi.

ABU DHABI



**Goldhofer conventional hydraulic & self-propelled trailers up to 68 axle lines were used for transportation and Liebherr 1000t, 600t and 400t crawler cranes were used for installation purposes.*

OIL & GAS

SAUDI ARABIA

Providing our expertise to a Gas manufacturing plant.

**Liebherr 1200t and 500t mobile cranes were used for this project.*



Transporting and installing off-shore rig legs

**Liebherr 600t crawler crane and 250t crawler crane were used for the tailing operation along with 2 file, 18 axle conventional hydraulic trailers configured with turntable bolster attachments for the transportation.*



Click on icon to return to the project slide

UAE

OIL & GAS



Click on icon to return to the project slide

Complete transport and heavy lifting solutions for an oil company in Iraq.

IRAQ



OIL & GAS



Click on icon to return to the project slide

Completed the **transportation** of a **HP inlet separator (92t)** and **Feed gas separator (252t)** within **JAFZA** and from **JAFZA** to **Abu Dhabi**

HP inlet separator:

6.34m width
10.95m length
5.81m height
92t weight

Feed gas separator:

7.2m width
19.82m length
9.53m height
252t weight





UAE

Lifting of DHT reactor along
with 8 other smaller units.



**Liebherr 1000t crawler crane along with a 500t mobile crane were used for this project.*



AL FARIS

www.alfarigroup.com

POWER

POWER PLANTS



Click on icon to return to the project slide

Our specialised power plant expansion and upgrade solutions

50+ heavy tandem lifts including installation of HRSG modules at a UAE power plant.

**Liebherr 800t, 400t and 250t crawler cranes were used for lifting and transportation was completed using our conventional hydraulic trailers and self-propelled modular trailers.*

SHARJAH



Transportation & installation of 15 HRSG modules at a Power Plant in Hamriyah ranging from 160t to 353t

Al Faris fabricated 270 customised stools in-house for storage purposes of the modules on-site.

SHARJAH



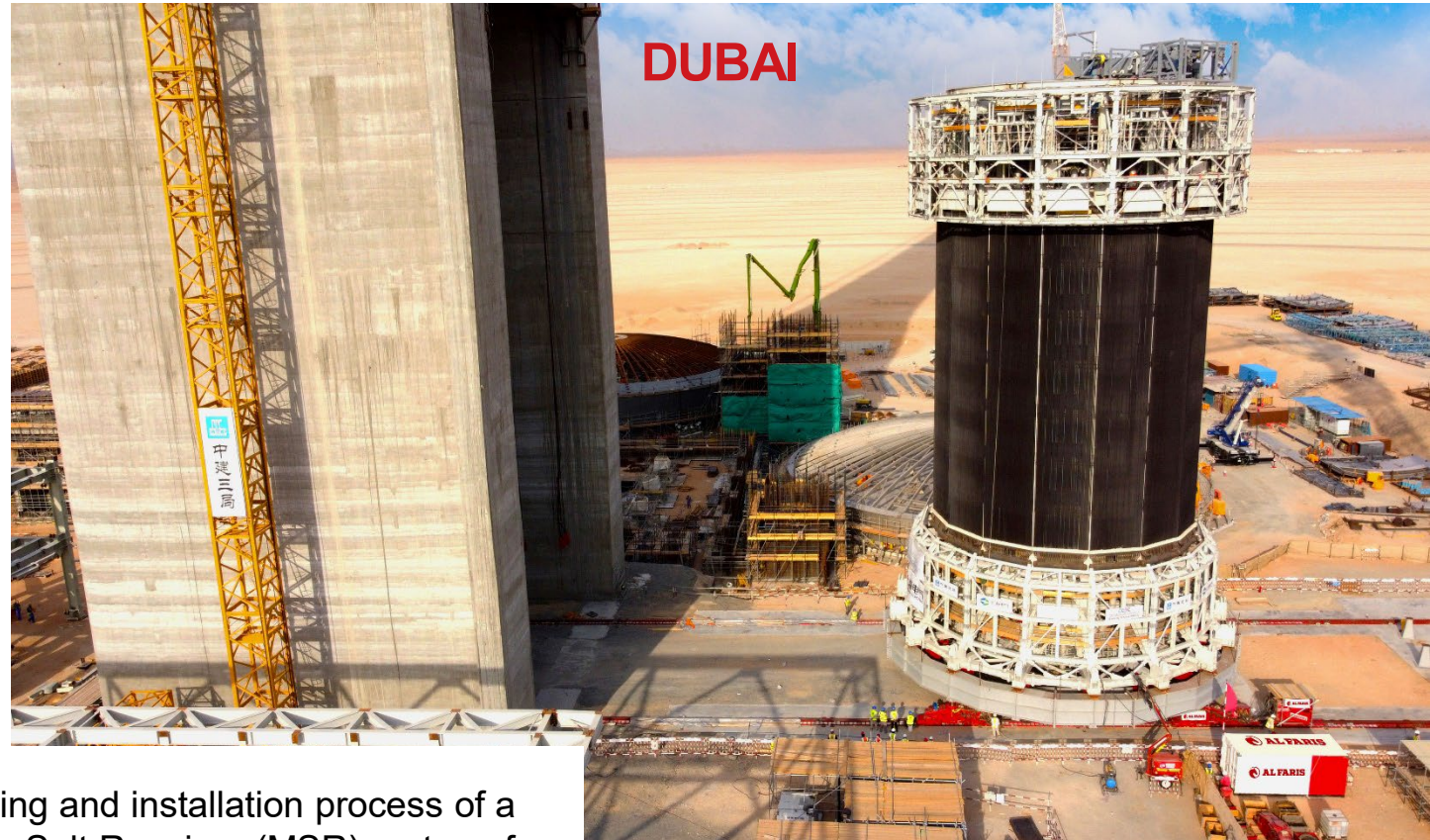
**Liebherr 1000t crawler crane along with other crawler and mobile cranes were used for the lifting process. The transportation was completed using our hydraulic conventional trailers and self-propelled modular trailers.*

RENEWABLE ENERGY

SOLAR PARK PROJECT



Click on icon to return to the project slide



Skidding, lifting and installation process of a 1800t Molten Salt Receiver (MSR) on top of the worlds highest Concentrated Solar Park (CSP) tower at a height of 222m.

**Mobile cranes, forklifts, push-pull systems, skid tracks, gantry units and strand jacks were used for this project.*



www.alfarigroup.com

RENEWABLE ENERGY

SOLAR PARK PROJECT



Click on icon to return to the project slide



Showcasing our
skidding expertise at
the Solar Park using
our hydraulic gantry.

DUBAI

www.alfarisgroup.com

RENEWABLE ENERGY

**Loading, transporting and discharging a tug boat and pontoons at The Hatta Pumped Storage Hydro Power Plant (PSHPP) project.*

HATTA, UAE

**Goldhofer conventional hydraulic trailers & self-propelled trailers up to 8 axle lines were used for transportation and Liebherr 100t and 250t mobile cranes were used for the off-loading process.*

JORDAN



Click on icon to return to the project slide

Installation of wind farm components.

**500t mobile crane was mobilized from our KSA branch along with 3 of our well-trained staff members showcasing our capabilities and strength to cater to any projects in the entire Middle Eastern Region.*



www.alfarisgroup.com

RENEWABLE ENERGY

SOLAR PARK PROJECT

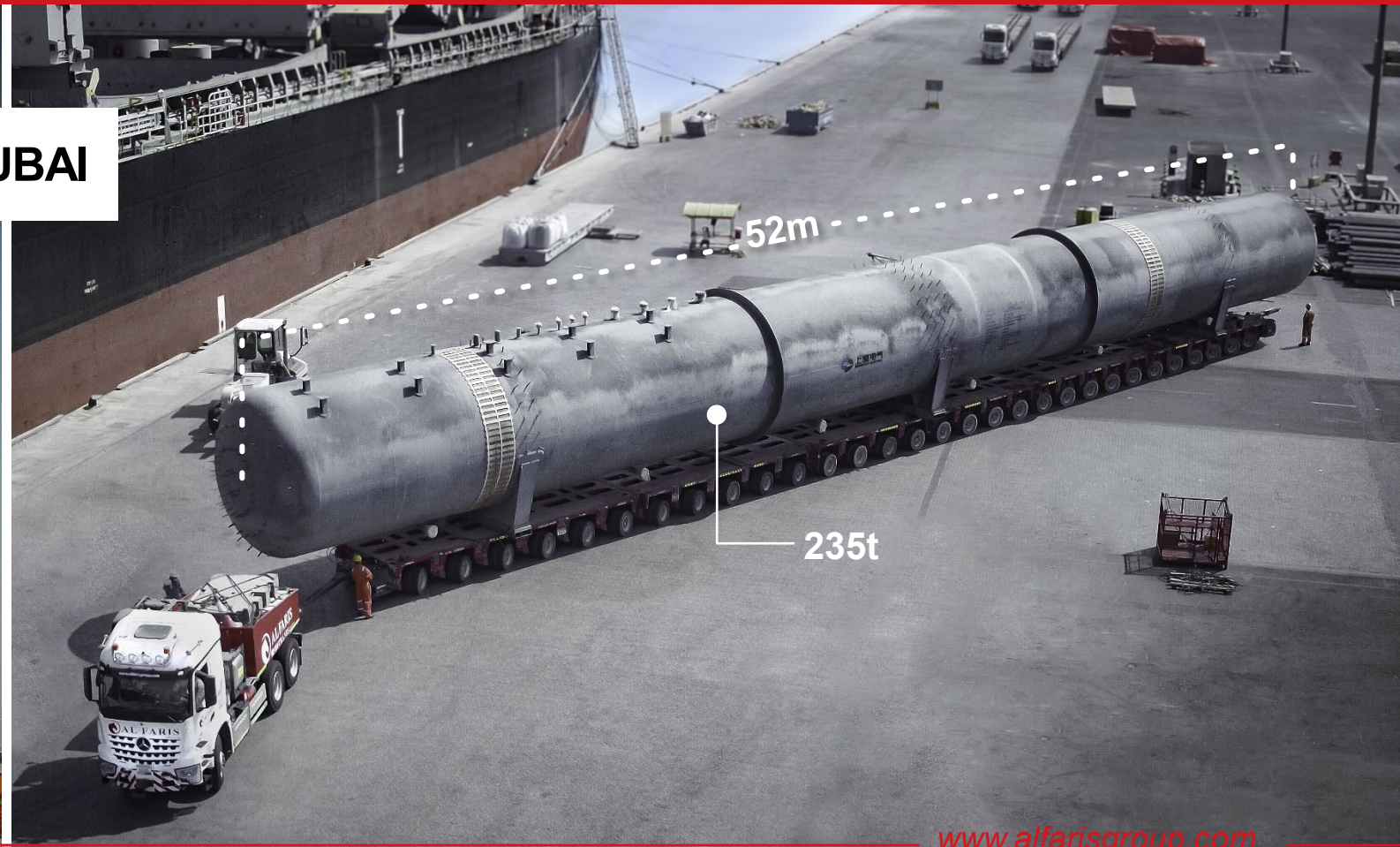


Click on icon to return to the project slide

The **52m** long and **235t** tanks were transported using our **Mercedes-Benz Arocs SLT** trucks and **Goldhofer THP/SL** conventional hydraulic trailers. At the project site, the overflow tanks were lifted using our **Liebherr 400t** crawler crane.



DUBAI



SHIPPING AND LOGISTICS



Click on icon to return to the project slide

Complete logistics solution

Receiving, port handling, custom clearance, transportation and installation of 9 overflow tanks (52m, 276t) and an expansion vessel (98t).

Cargo was safely transported from Jebel Ali Port to Dubai Solar Park and consequently installed with our crawler cranes.

UAE



www.alfarisgroup.com

**A selection of 2 files of 30 axle conventional hydraulic trailers were used for this project.*

SHIPPING AND LOGISTICS



Click on icon to return to the project slide

Transportation and storage of transformers

The offloading was done onto certified heavy duty stools and beams customised by Al Faris.

**A selection of 2 files of 8 axle conventional hydraulic trailers were used for this project.*

UAE



www.alfarigroup.com

SHIPPING AND LOGISTICS



Click on icon to return to the project slide

Transported the massive 336.6t Buoy on 2 rows of 10 axle self-propelled modular trailers

15.92m width
16.4m length
12.4m height
336.6t weight



www.alfarigroup.com



UAE

Top and tailing of offshore jacket and aligning it with the base jacket structure

**Liebherr 600t crawler crane along with 750t mobile crane were used for this operation.*



AL FARIS

www.alfarisgroup.com

MARINE / OFFSHORE



Click on icon to return to the project slide

Al Faris Group assisted in the relocation, transportation and erection of massive structures which are the biggest of its kind in the mining world!

Recently we relocated the entire loads (**Tipper car**, **Bucket wheel stacker reclaimer** and **Ship loader**) in one piece without dismantling.



2 years ago...



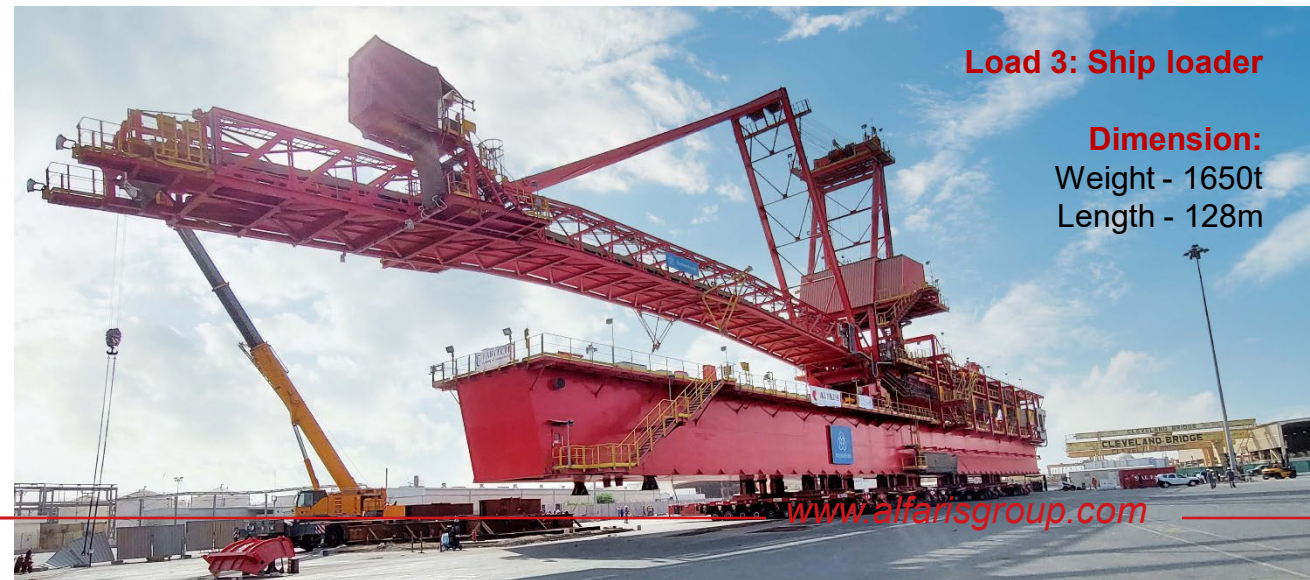
Load 2:
**Bucket wheel
stacker reclaimer**

Dimension:
Weight - 2100t
Length - 98m



Load 1: Tipper Car

Dimension:
Weight - 600t
Length - 77m



Load 3: Ship loader

Dimension:
Weight - 1650t
Length - 128m

www.alfarisgroup.com

MARINE / OFFSHORE



Click on icon to return to the project slide

Land transport, loading and sea transport of **two cold boxes** from Ras Al Khaimah to Abu Dhabi.



www.alfarisgroup.com

MANUFACTURING



Click on icon to return to the project slide

Jacking and skidding
of flanging machine
in a confined space
**SBL900 gantry system was
used for this operation*

UAE



POWER (Energy Solutions)



Click on icon to return to the project slide

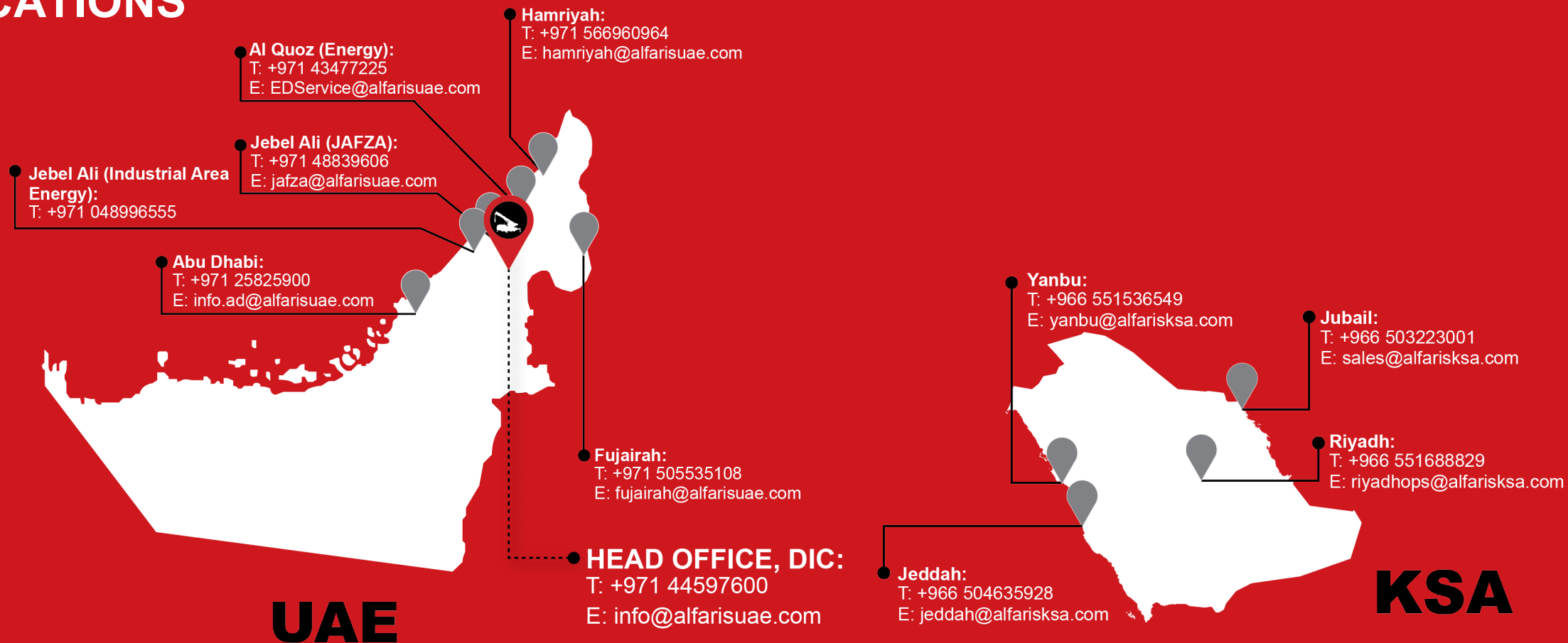


Provided power for commissioning and operation of Fujairah Oil Terminal FZC (FOT), a world class 1.177 million cubic meter onshore oil storage facility based in the rapidly developing port of Fujairah for over 4 years.

FUJAIRAH

OFFICE LOCATIONS

CORPORATE OFFICES



UAE TOLL FREE NUMBER: 800 CRANES / 800 272637

KSA TOLL FREE NUMBER: 9200 CRANE / 9200 27263

BAHRAIN TOLL FREE NUMBER: 800 08700

SPECIALISTS IN HEAVY LIFTING, HEAVY TRANSPORT & ENERGY SOLUTIONS

